

# MONTHLY MEMBERSHIP PROGRESS REPORT

District 17 N

Results as of: 6/30/2024

GMT:

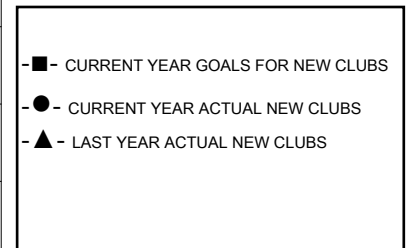
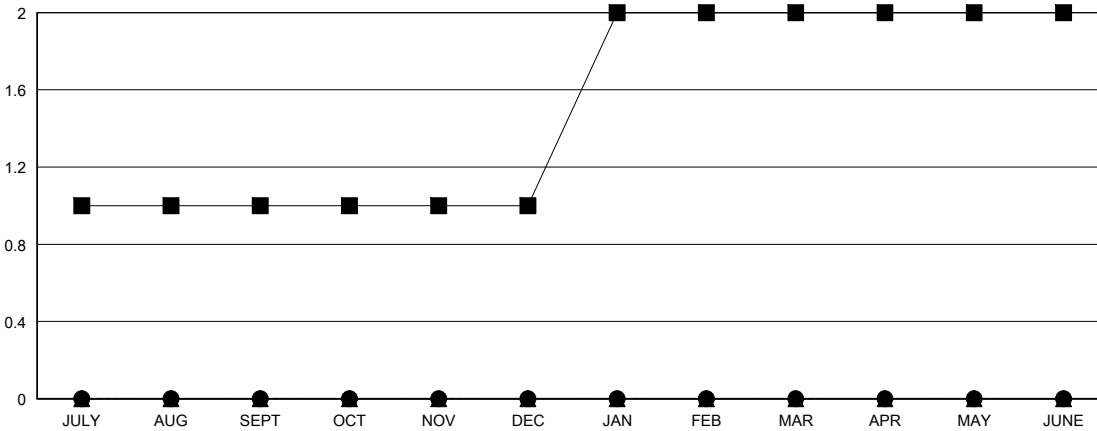
LOCATION KANSAS

GMT CA

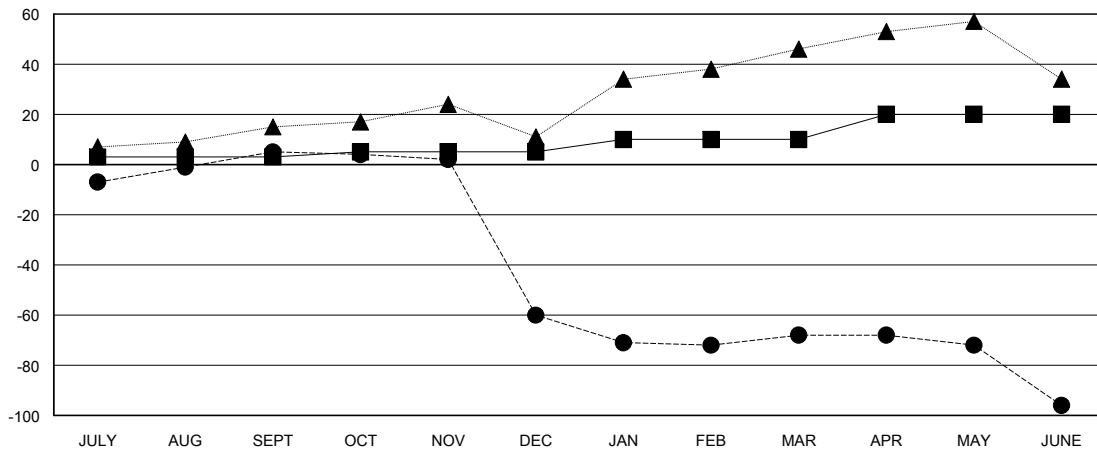
Clubs			
RESULTS FOR 2023-2024			
QUARTER	NEW CLUB GOAL	NEW CLUBS	DROPPED CLUBS
JULY/AUG/SEPT	1	0	0
OCT/NOV/DEC	0	0	1
JAN/FEB/MAR	1	0	0
APR/MAY/JUNE	0	0	0

Members			
RESULTS FOR 2023-2024			
QUARTER	MEMBER GROWTH NET GOAL	MEMBER GROWTH ACTUAL	DROPPED MEMBERS ACTUAL (including transfers)
JULY/AUG/SEPT	3	37	28
OCT/NOV/DEC	2	25	87
JAN/FEB/MAR	5	42	35
APR/MAY/JUNE	10	40	63

GOALS AND ACTUAL NEW CLUBS CUMULATIVE



GOALS AND ACTUAL MEMBERS CUMULATIVE



DROPPED CLUBS: 1	39 CLUBS OF 68 ADDED 1 OR MORE NEW MEMBERS	<b>GENDER DISTRIBUTION</b> MALE 942 (68.46%) FEMALE 434 (31.54%)
<b>DROPPED MEMBERS</b> DECEASED 26 CLUB CANCELLED 14 OTHER 172 TOTAL 212	<a href="#">CLICK HERE FOR CUMULATIVE MEMBERSHIP DATA</a>	TOTAL FAMILY UNIT MEMBERS 251 FAMILY MEMBERS PAYING HALF DUES 129